

Hyundai **ELANTRA**

Ace the chase



 **HYUNDAI**

Don't just chase, ace it.

The new ELANTRA introduces "DYNAMIC PRECISION", the identity of a brand new exterior style through Fluidic Sculpture 2.0. The exterior comprises of a dynamic and sophisticated profile and completes the modern and future-oriented design.

Opt for Hyundai ELANTRA, your next move towards victory.

 2.0L I4 DOHC 16 Valves

 154 HP @ 6,200 rpm

 6-Speed Automatic Transmission





Clear the roads for a grand impression

Dare yourself to be the heroic front of
all endeavors that push beyond the ordinary.
Be bolder. Be fearless.
Be the finish line in the race to success.



Hexagonal Radiator Grille
Hyundai's signature hexagonal front grille
creates a bold and dynamic design identity.

**Sporty Bumper
with Air Curtains**
To help elevate looks along
with aerodynamics.

Light up the path ahead

Tetra LED Projection headlamps improve lighting performance at wider angle to secure a sufficient view for the driver.



Headlight Delay

The lights guide you to the doorstep as they remain lit till 15 seconds after you lock the vehicle.



Daytime Running Light (DRL)

Daytime running light's (DRL's) slick wing design delivers a future-oriented image.



Tetra LED Headlamps

Tetra LED headlamps illuminate the road with crisper, more intense light than any other headlamp while using lesser power.





A power packed profile

A profile packed with noticeably remarkable features are all what make the ELANTRA a standout car.



Character Line

Emphasizes the ELANTRA'S dynamic but refined image by accentuating the side character line and volume on the lower side area.



LED Outside Mirrors

Mirrors are electrically -controlled, while LED repeaters add a touch of refinement.



Shark Fin Antenna

The shark fin antenna, which boasts superior sensitivity, is a premium styling point in the sporty exterior design.



16" Alloy Rims

The smarter, the better

When you open the doors to the future, it has to be in style. Equipped with the innovative and advanced Smart Entry system, the Smart Door handles illuminate as you move to enter.



Smart Door Handle



Engine Start/Stop Button

The engine starts quickly at the press of a button when the Smart Key is inside the vehicle.



Smart Trunk

When a person holding a Smart Key stays in a position near the rear trunk for approximately 3 seconds or longer, the trunk opens and is propped upward.

Give your followers a great view

The ELANTRA comprises of a dynamic, moderate and sophisticated profile, and offers a modern, sporty and future oriented design.



LED Rear Combination Lamp

Produces a multi-dimensional and premium feel using high-tech graphic details.



Sporty Bumper with Reflectors



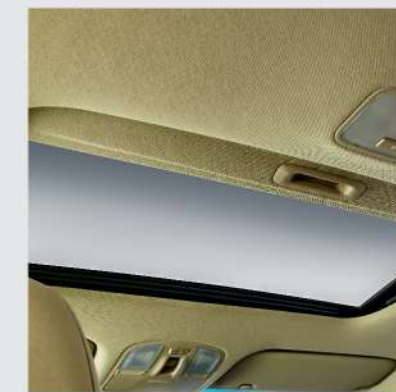
Rear Camera with Dynamic Parking Guidelines





Open up to new challenges

Beauty that transcends within, manifesting an open-air driving experience into an alluring interior and exterior design.



Smart Power Sunroof

The sunroof is made for those special days when you want to enjoy the sunshine and fresh breeze. A safety sensor prevents closure.



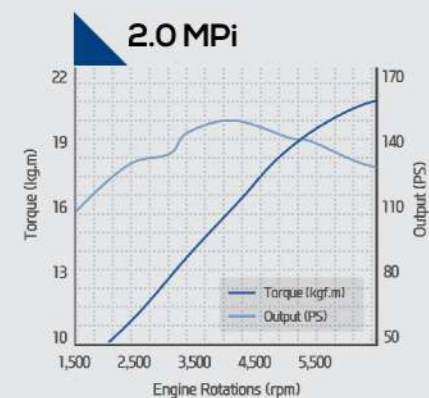
Drive from a position of power

The Hyundai ELANTRA comes with a 2.0 MPi gasoline engine that makes it the most powerful in its class. This allows the driver to accelerate whenever and as much desired.



2.0 MPi Gasoline Engine

Engine type	DOHC
Displacement (cc)	1,999
Max. Power (HP(ps)/rpm)	154(156)/6,200
Max. Torque (Nm(Kgf.m)/rpm)	195(19.9)/4,500



Lightweight

- Aluminium Block, Plastic Intake Manifold.

High Fuel Efficiency

- Low Friction Seal, Friction Reduction, Coatings on Moving Systems.
- Exhaust Cooling Reinforcement.

Quietness

- Lower Crankcase, Direct Accessory.





Optimized and comfortable

Displaying confident mastery over materials and forms, the cabin space exudes an air of inviting comfort and luxurious exclusivity.



Claim your throne

Discover Hyundai's secret for comfort in the fully adjustable, 10-way powered driver seat, which comes fully equipped with Lumbar Support.



2-Way Powered Lumbar Support



Cup Holders



Front Console Box



8-Way Powered Driver Seat



Step out of the ordinary as you step in

From the basic layout to the execution of the details, the ELANTRA'S interior design reveals itself to be roomy, comfortable and simply brilliant.



Seat Folding System (60:40 type)

The rear seats can be folded flat in 60:40 ratio and create a conveniently versatile load space.



Rear Armrest with
Cup Holder



Rear AC Vents



Break through the barriers of the ordinary

Driver centric horizontal layout, arrangement of buttons grouped by function and ergonomic design redefine the interior experience in the ELANTRA.





Move the world as you move ahead

Captivating multimedia and atmospheric adjustments secure exceptional convenience.



7" Infotainment System
Can be operated conveniently thanks to its touchscreen. The Bluetooth function lets the driver listen to music and make calls safely while driving.

Wireless Charging



Clean Air
An in-car ionization system that helps to purify the air flowing in through the climate control system.



Dual Zone Auto Air Conditioning
The driver and passenger enjoy individually customized comfort.

Set your pace to the beat

6 surround sound speakers built into the car for
loud and clear music.



Accelerate to innovation

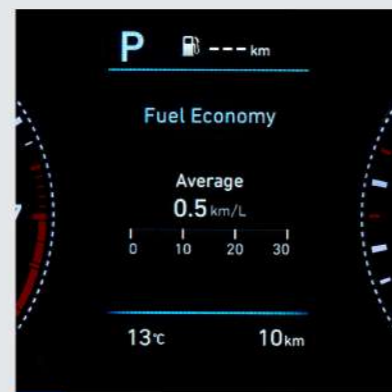
Cluster gauge integrates 4.2" TFT LCD screen which with its circular rev counter and speedometer is illuminated with backlighting for optimum clarity and readability.



Digital Speedometer
Get a precise digital reading of your speed.



Supervision w/4.2" TFT LCD Screen



Fuel Economy Screen





Take control of your destination

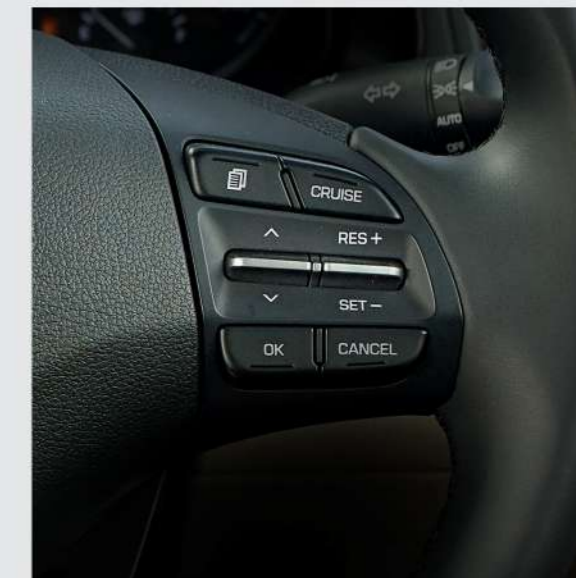
The view before the view. Settle affront a leather stitched tilt and telescopic steering wheel with a horizontally scaped button arrangement for driver convenience.



Multimedia Control



In-Dash Cluster Illumination Control



Auto Cruise Control

Shift perspectives as you shift gears

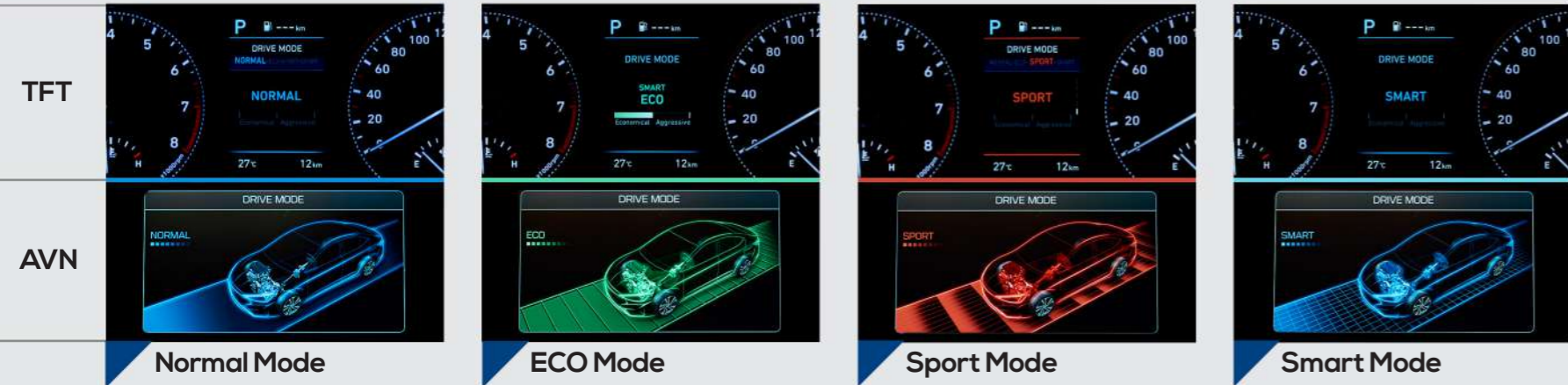
Offering dynamic & efficient driving performance with the help of rapid-shift and optimized gear-ratio, the ELANTRA offers four drive modes and an easy gear shift.



6-Speed Automatic Transmission

Unmatched fuel economy plus dynamic performance

- A new shift pattern with Sport mode.
- Optimized transmission design for best-in-class fuel economy.





AHS-427
ICT - ISLAMABAD



Secure your lead

The highest convenience in the class is provided by new technologies related to advanced riding safety, such as the Dual SRS Airbags.



High Strength Steel

Extended application of Ultra High Tension Steel Plate reinforces chassis rigidity.



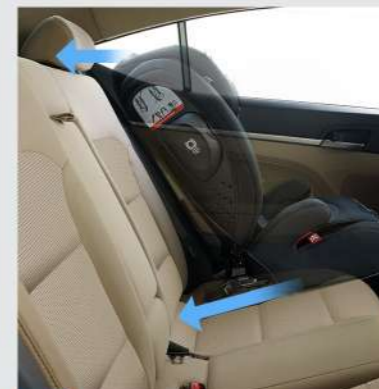
Speed Sensing Door Lock

Automatically locks car doors when the car reaches a certain speed.



ISOFIX Anchor Points

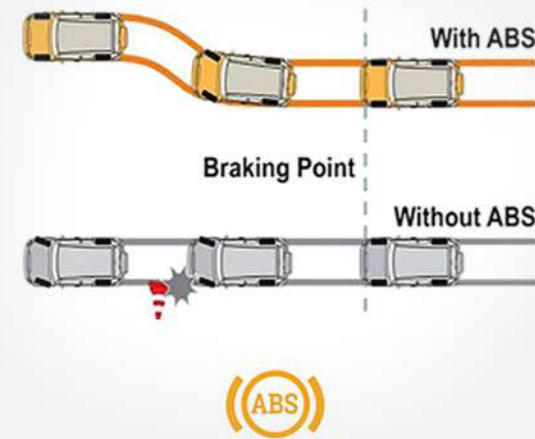
Are situated behind the rear seat head rest.



ISOFIX Child Seat

Go uphill, fearlessly

Equipped with all the best safety driving features for daily driving and for those occasional maneuvers.



ABS with EBD & BA



Electronic Stability Control (ESC)

Provides optimal control to the engine steering device during sudden braking and turning, in order to maintain vehicle stability.



Hill Start Assist

Maintains the brake pressure for a set period of time as you switch from the brakes to the gas pedal.



Traction Control





Take over the road and then
your destination

Features



Daytime Running Light (DRL)



Power Windows



Luggage Storage



Spare 16" Alloy Wheel



Center Console



Front Cup Holders



Wireless Phone Charging



Dome Lights



High Mounted Stop Lamp



Concealed Boot Lid Button



Front Door Armrest with Map Pocket



Rear Arm Rest with Cup Holder



Sunglasses Holder



Vanity Mirror with Illumination



AUX/USB

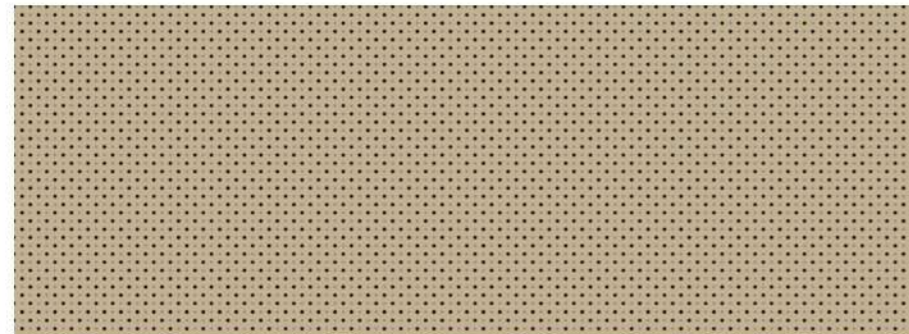


Glove Box

Trim



Beige two-tone Interior



Colors



Polar White



Silver Metallic



Graphite Grey Metallic



Black Diamond Metallic



Teal Blue



Fiery Red

Specifications

Brand	Hyundai
Model	ELANTRA
Body Type	Sedan
Exterior L x W x H (mm)	4620 x 1800 x 1450
Wheelbase (mm)	2700
Kerb Weight (kg)	1255 - 1373
Gross Vehicle Weight (kg)	1789
Minimum Turning Radius (m)	5.3
Number of Doors	4 doors
Seating Capacity	5 persons
Number of Seating Rows	2 rows
Luggage Compartment Capacity (Ltrs.)	407

Engine	2.0 MPI Gasoline Engine
Fuel Type	Petrol
Emission Standard	Euro 2
Displacement (cc)	1999
Max Power kW (HP) / rpm	115 (154)/6200
Max Torque N-m / rpm	195/4500
Engine Type	DOHC 16-Valve w/ Dual CVVT
Cylinders	In-Line 4-Cylinder
Compression Ratio	10.3
Fuel System	MPI
Fuel Tank Capacity (Ltrs.)	50

Drive Type & Transmission	
Drive	2WD
Transmission	6-Speed A/T
Drive Mode Select	Sport/Smart/ECO/Normal

Wheel & Tyre	
Wheel Type	Alloy Wheel
Wheel Size	16"
Spare Tyre	
Tyre Size	215/55R16
Full Size Wheel & Tyre	Full Size
Wheel Type	Alloy Wheel

Suspension	
Front	MacPherson Strut
Rear	Torsion Beam

Specifications

Steering Wheel	
Material	3-Spoke Leather
Power Steering	•
Adjustment	Tilt & Telescopic
Steering Switches	Audio + MID + Voice Command
TGS Knob	Leather

Brake	
Brake Front	Ventilated Disc
Brake Rear	Disc 14"
Anti-Lock Braking System (ABS)	•
Electronic Brake-Force Distribution (EBD)	•
Brake Assist (BA)	•
Parking Brake Type	Hand Parking

Locks & Security	
Door Locking Central Door Locking	•
Door Locking Speed Sensing Door Lock	•
Door Locking Child Safety Lock	• (Manual)
Remote Fuel-Lid Opener	•
Remote Boot-Lid Opener	•
Smart Trunk Opener	•
Key Set Keyless Entry	Smart Key with Welcome Lamp
Key Set Burglar Alarm	•
Push Start Button	•
Immobilizer	•

Exterior	
Front Radiator Grille	Chrome Coating
Bumper Front	Body Color
Bumper Rear	Body Color
Side Mirror Finish	Body Color
Side Mirror Electrically Adjustable	•
Side Mirror Electrically Retractable with LED Turn Signal	•
Mud Guard (Front & Rear)	•
Rain Sensing Wipers	•
Side Moulding	Belt Line, Chrome Coating

Door	
Door Trim	Hi - Fabric + PVC
Map Pocket	•

Specifications

Door Outside Handle		Chrome Coating
Door Inside Handle		Silver Paint
Power Windows		•
Roof		
Sunroof		•
Inside Rear View Mirror		Day & Night
Sunvisor	Vanity Mirror with Illumination	•
Antenna		Shark Fin
Seat		
Seat Upholstery		Hi-Fabric
Front Seat	Headrest	Up/Down (D + P)
	Seat Height Adjuster	D + P
	Power Seat	
	Driver (8-way) + Lumbar Support (2-way)	•
	Centre Console Box	PVC Deluxe
	Foot Rest	•
	Seat Back Pocket	•
Rear Seat Headrest		
	Headrest	Up/Down (LH/RH)
	Armrest with Cup Holder	•
	Rear Seat Folding	60:40 Split Folding Seating
Lighting		
Front	Head Lamp	Tetra LED
	Daytime Running Lamp	LED
Rear	Rear Combination Lamp	LED
Cabin	Front Personal Lamp	•(With Sunglasses holder)
	Room Lamp	•
Instrument Panel		
Cluster Type		Supervision w/4.2" TFT LCD
Speedometer		Optitron Meter + Digital Speedometer
In-Dash Cluster Illumination Control		•
Tachometer		•
Comfort & Safety		
Air Bags		Driver + Passenger
Seat Belt	Front	3 Point ELR x 2 with Pretensioner and Force Limiter
	Rear	3 Point ELR x 2 + 2 Point NR
Auto Light Control		•

Specifications

ISOFIX Seat Anchors		•
Electronic Stability Control (ESC)		•
Hill Start Assist Control (HAC)		•
Traction Control System (TCS)		•
Auto Cruise Control		•
Trip Computer		•
Battery Charger		Wireless/USB
Headlight Delay		•
AVN		
Audio	AM/FM Radio	•
	MP3	•
	Screen	7" Display
Connectivity	USB/AUX	•
	Bluetooth	•
Camera	Rear View Camera	•
Number of Speakers		6
Heater & Air Conditioner		
Air Conditioner		Dual Zone with Climate Control
Rear AC Ventilation		•
Glass		
Glass (Windshield/Front Rear Door/Backlite)		Tint

- The above values are results from internal testing and are subject to change after validation.
- Some of the equipment illustrated or described in this catalog may not be supplied as standard equipment and may be available at extra cost
- Hyundai Nishat Motor (Private) Limited reserves the right to change specifications and equipment without prior notice.
- The color plates shown may vary slightly from the actual colors due to the limitations of the printing process.
- Please consult your dealer for full information and available colors and trims.

Unit : mm



Overall Width 1,800



Overall Length 4,620
Wheel Base 2,700



Overall Height 1,450

Dealership Network



Dealership Location

Sr. No	City	Dealership	Phone Number	Address
1	Lahore	Hyundai Lahore	042-35404222-5	Main Jail Road, Lahore.
2	Lahore	Hyundai Airport	042-111-111-991 0311-1111991	Main Airport Road / Ghazi Road, Lahore.
3	Lahore	Hyundai City Store	042-32592245	Emporium Mall, Abdul Haque Road, Trade Centre Commercial Area Phase 2, Johar Town, Lahore.
4	Lahore	Hyundai Central	0315-2368725 042-38914036	75A, L Block, Gulberg 3 (Next to Kalma Chowk), Lahore.
5	Lahore	Hyundai Premium	0342-4986324	17 km, Multan Road, Lahore.
6	Islamabad	Hyundai Islamabad	051-111-500-200 051-4435400	Plot #422, 9th Avenue, Sector I-9/3, Islamabad.
7	Karachi	Hyundai South	0301-1009730-4 021-35115581-5	Plot #1, Street #3, Sector-23, Korangi Industrial Area, Karachi.
8	Karachi	Hyundai City Store	021-35361464-6	Emerald Tower - G-19, Block-5, Near Do Talwar, Main Clifton Road, Karachi.
9	Faisalabad	Hyundai D Ground	0300-8650349 041-8723750-3	2B, People's Colony No. 1, D Ground, Faisalabad.
10	Quetta	Hyundai Quetta	081-2881441-4 081-2881555	Near BUIITEMS, Main Airport Road, Quetta.
11	Multan	Hyundai Oasis	061-4540377-9	319-A, Sher Shah, Multan.
12	Peshawar	Hyundai KPK	091-2652315 091-2652314	Main G.T. Road, Near Ring Road Bridge, Peshawar.
13	Sialkot	Hyundai Eastern	052-3575091-92	Daska Road DaakWala Stop, Sialkot.
14	Chakwal	Hyundai Chakwal	0348-4727272	Near PAF Murid Airbase, Talagang Road.



About Us

Hyundai Nishat Motor (Private) Limited, a Nishat Group company, is a joint venture among three leading international businesses; Nishat Group, Sojitz Corporation (Japan) and Millat Tractors Ltd. Hyundai Motor Company (Korea) has partnered with Hyundai Nishat for the manufacturing, marketing and distribution of Hyundai's product line in Pakistan. Hyundai Nishat aspires to be amongst the leading auto manufacturers in Pakistan in the coming years to align its track record with other sister concerns of the Nishat Group. Our vision is to become the most valued automobile brand and recreate the global success of Hyundai in Pakistan.

Since our inception in 2017, we are rapidly establishing our 3S distribution network across the country through our partner franchisees. Our manufacturing plant, being set up in the largest industrial estate of Pakistan, avows world class precision with the deployment of the most advanced production techniques.